



Microhard Systems Inc.

User Note

Radio Network Utility
Version 2.0
Document: RadioNetwork V2.0



 Microhard Systems Inc.

Building 17, 2135-32nd Avenue NE
Calgary, Alberta
Canada T2E 6Z3

Phone: (403) 248-0028
Fax: (403) 248-2762
www.microhardcorp.com

Warranty

Microhard Systems Inc. warrants that each product will be free of defects in material and workmanship for a period of one (1) year for its products. The warranty commences on the date the product is shipped by Microhard Systems Inc. Microhard Systems Inc.'s sole liability and responsibility under this warranty is to repair or replace any product which is returned to it by the Buyer and which Microhard Systems Inc. determines does not conform to the warranty. Product returned to Microhard Systems Inc. for warranty service will be shipped to Microhard Systems Inc. at Buyer's expense and will be returned to Buyer at Microhard Systems Inc.'s expense. In no event shall Microhard Systems Inc. be responsible under this warranty for any defect which is caused by negligence, misuse or mistreatment of a product or for any unit which has been altered or modified in any way. The warranty of replacement shall terminate with the warranty of the product.

Warranty Disclaims

Microhard Systems Inc. makes no warranties of any nature of kind, expressed or implied, with respect to the hardware, software, and/or products and hereby disclaims any and all such warranties, including but not limited to warranty of non-infringement, implied warranties of merchantability for a particular purpose, any interruption or loss of the hardware, software, and/or product, any delay in providing the hardware, software, and/or product or correcting any defect in the hardware, software, and/or product, or any other warranty. The Purchaser represents and warrants that Microhard Systems Inc. has not made any such warranties to the Purchaser or its agents MICROHARD SYSTEMS INC. EXPRESS WARRANTY TO BUYER CONSTITUTES MICROHARD SYSTEMS INC. SOLE LIABILITY AND THE BUYER'S SOLE REMEDIES. EXCEPT AS THUS PROVIDED, MICROHARD SYSTEMS INC. DISCLAIMS ALL WARRANTIES, EXPRESS OR IMPLIED, INCLUDING ANY WARRANTY OF MERCHANTABILITY OR FITNESS FOR A PARTICULAR PROMISE.

MICROHARD SYSTEMS INC. PRODUCTS ARE NOT DESIGNED OR INTENDED TO BE USED IN ANY LIFE SUPPORT RELATED DEVICE OR SYSTEM RELATED FUNCTIONS NOR AS PART OF ANY OTHER CRITICAL SYSTEM AND ARE GRANTED NO FUNCTIONAL WARRANTY.

Indemnification

The Purchaser shall indemnify Microhard Systems Inc. and its respective directors, officers, employees, successors and assigns including any subsidiaries, related corporations, or affiliates, shall be released and discharged from any and all manner of action, causes of action, liability, losses, damages, suits, dues, sums of money, expenses (including legal fees), general damages, special damages, including without limitation, claims for personal injuries, death or property damage related to the products sold hereunder, costs and demands of every and any kind and nature whatsoever at law.

IN NO EVENT WILL MICROHARD SYSTEMS INC. BE LIABLE FOR ANY INDIRECT, SPECIAL, CONSEQUENTIAL, INCIDENTAL, BUSINESS INTERRUPTION, CATASTROPHIC, PUNITIVE OR OTHER DAMAGES WHICH MAY BE CLAIMED TO ARISE IN CONNECTION WITH THE HARDWARE, REGARDLESS OF THE LEGAL THEORY BEHIND SUCH CLAIMS, WHETHER IN TORT, CONTRACT OR UNDER ANY APPLICABLE STATUTORY OR REGULATORY LAWS, RULES, REGULATIONS, EXECUTIVE OR ADMINISTRATIVE ORDERS OR DECLARATIONS OR OTHERWISE, EVEN IF MICROHARD SYSTEMS INC. HAS BEEN ADVISED OR OTHERWISE HAS KNOWLEDGE OF THE POSSIBILITY OF SUCH DAMAGES AND TAKES NO ACTION TO PREVENT OR MINIMIZE SUCH DAMAGES. IN THE EVENT THAT REGARDLESS OF THE WARRANTY DISCLAIMERS AND HOLD HARMLESS PROVISIONS INCLUDED ABOVE MICROHARD SYSTEMS INC. IS SOMEHOW HELD LIABLE OR RESPONSIBLE FOR ANY DAMAGE OR INJURY, MICROHARD SYSTEMS INC.'S LIABILITY FOR ANY DAMAGES SHALL NOT EXCEED THE PROFIT REALIZED BY MICROHARD SYSTEMS INC. ON THE SALE OR PROVISION OF THE HARDWARE TO THE CUSTOMER.

Proprietary Rights

The Buyer hereby acknowledges that Microhard Systems Inc. has a proprietary interest and intellectual property rights in the Hardware, Software and/or Products. The Purchaser shall not (i) remove any copyright, trade secret, trademark or other evidence of Microhard Systems Inc.'s ownership or proprietary interest or confidentiality other proprietary notices contained on, or in, the Hardware, Software or Products, (ii) reproduce or modify any Hardware, Software or Products or make any copies thereof, (iii) reverse assemble, reverse engineer or decompile any Software or copy thereof in whole or in part, (iv) sell, transfer or otherwise make available to others the Hardware, Software, or Products or documentation thereof or any copy thereof, except in accordance with this Agreement.

Products mentioned in this document are trademarks of their respective holders.

Table of Contents

1.0 Overview	4
2.0 Connection to Modem	4
3.0 Network Configuration	6
4.0 Modem Configuration	8
5.0 Frequency Restriction	10
6.0 Diagnostics	11
7.0 Firmware Upgrade	12
Appendices	13
Appendix A: S Registers	13

1.0 Overview

This User Note contains information describing how to use the Radio Network Utility.

Radio Network queries may be run over an 'online' radio modem network to gather information related to the operational status of specific (addressable) modems. Also, a specified modem may also be configured remotely. Effect on the network's data throughput is minimal and in direct proportion to the complexity and frequency of the queries and commands.

Wired connection to a given modem, to access the Radio Network data, is via the front panel SERIAL DIAG (RJ45) port.

2.0 Connection to Modem

Note: In order to use the Radio Network program, the computer it is installed on **MUST** have MS XML 4.0 or later installed. MS XML can be found at the Microsoft website or at the following http address. <http://msdn.microsoft.com/XML/XMLDownloads/default.aspx>

There are two main types of connection which may be made to the modem:

- **Diagnostics/Configuration**

The connection most often made between a PC and modem is for diagnostic and configuration purposes. The cable to be used for such a connection is Microhard System Inc. part number MHS044000 (black).

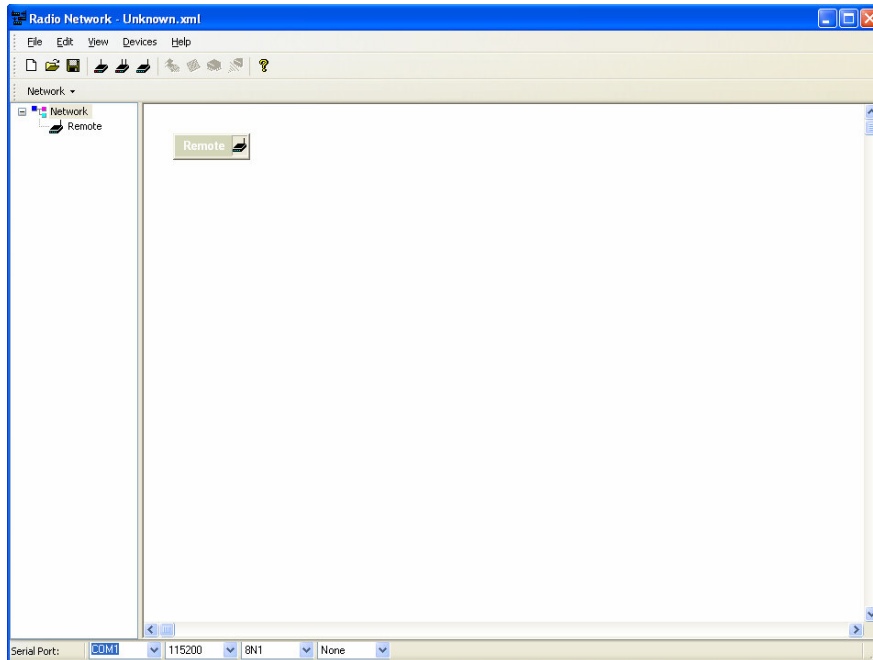
- **Upgrade**

Modem firmware may be upgraded using the Radio Network utility. The cable required for this connection is different from the cable referenced above. To upgrade firmware, use cable part number MHS044010 (blue).

The SERIAL DIAG port supports connection to a PC COM port. Note that for the Diagnostic/Configuration connection, only Rx/D, Tx/D, and SG are utilized.

By Default the diagnostics data is transferred to/from the modem at 115200bps. The only user-selectable option with respect to the communications interface is selection of an available COM port (PC). If a given COM port is in use, the COM port number will be followed by (In Use).

2.0 Connection to Modem (continued)



Upon launching the Radio Network Utility, the window shown at left will appear.

In this screen capture the default settings can be seen as: Serial Port: (COM1) (115200) (8N1) (None) as being selected for use.

The connection between the modem and PC is established when the correct Com Port, and target modem is selected.

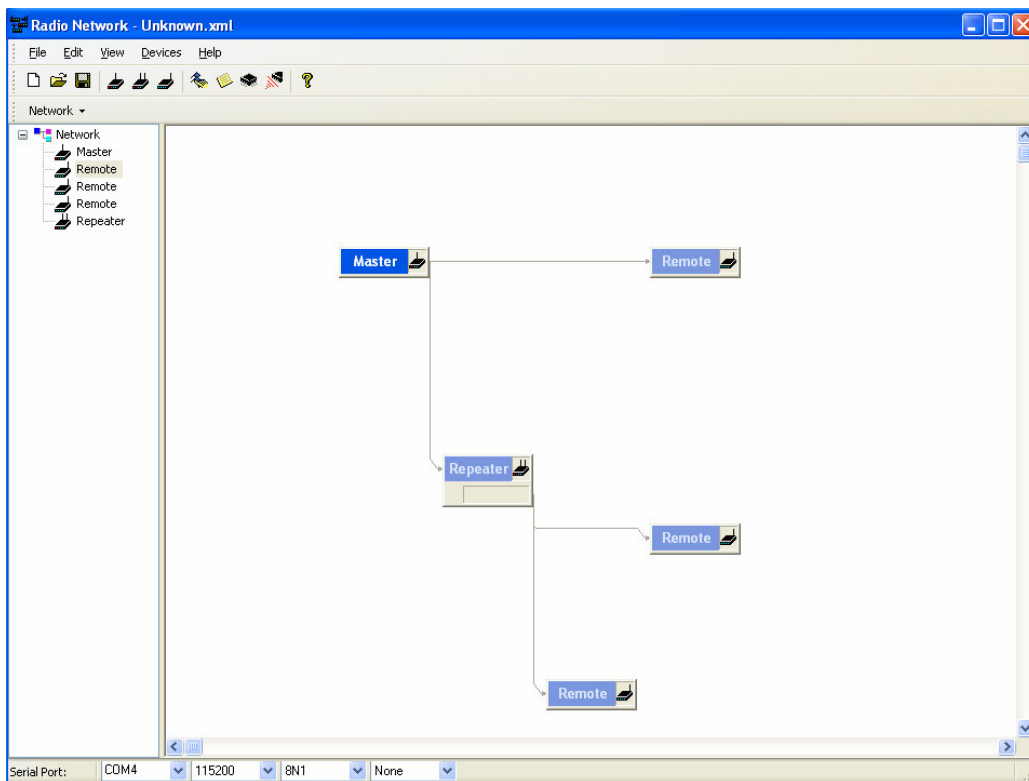
3.0 Network Configuration

The Main screen allows for easy setup of any network configuration. Toolbar tabs allow the user to layout the design and make changes as necessary.



Three buttons on the tool bar labeled 'Main', 'Repeater' and 'Remote' are the only buttons to be concerned with when initially setting up the wireless network.

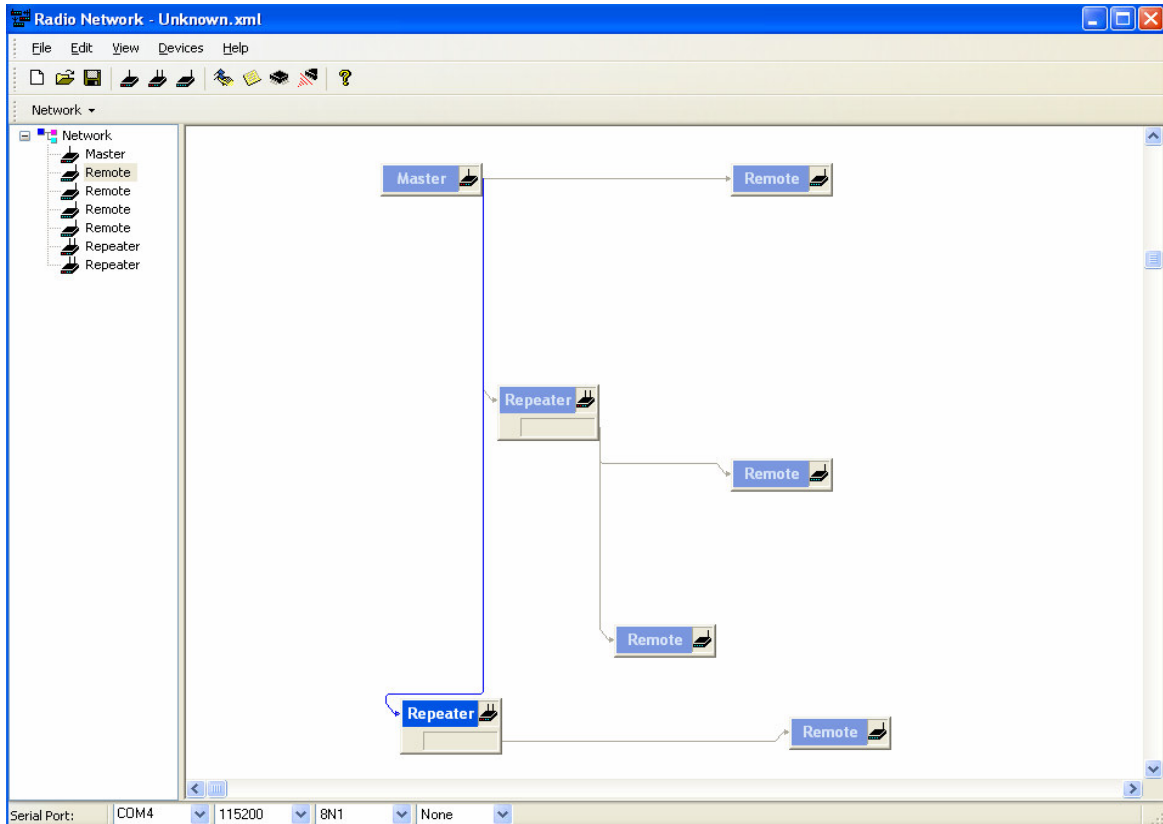
Left clicking the mouse button on the toolbar icon holds a unit ready to be placed anywhere on the main screen. By left clicking the mouse again releases the unit onto the screen. If a unit needs to be repositioned, click and drag that unit using the mouse to its desired location. Showing connections (upstream/downstream) is done by clicking the picture of the unit and dragging the mouse to the destination unit till a line appears.



Completed Example of a Network setup

3.0 Network Configuration (continued)

At anytime new unit(s) can be added to the system by placing the new modem(s) and making a connection to its destination modem(s).



The modems can be renamed to make it easier to identify them individually. This can be done by either right clicking on the unit you wish to rename or using the option from the toolbar (see below).

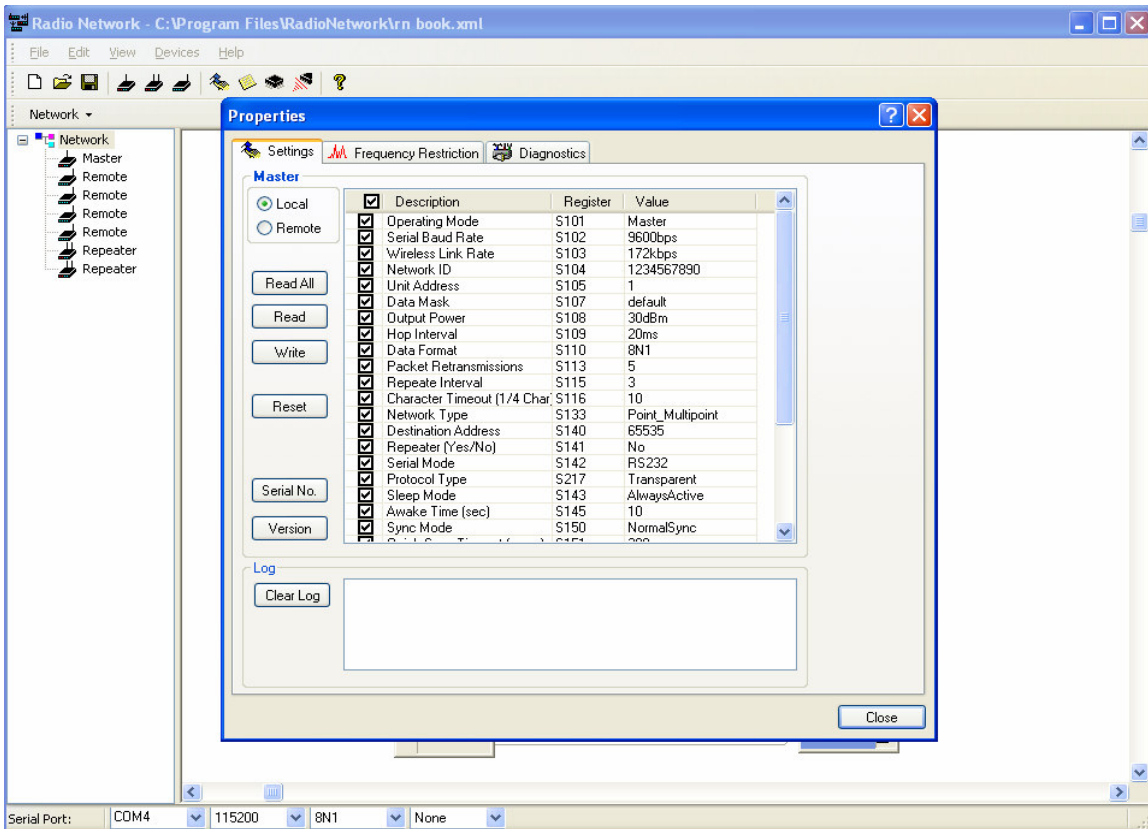


Once the design of the network is completed you are ready to configure your modems, initially with the diagnostic cable. But once setup, changes to modems can be made over the air as well as diagnostics and updates.

4.0 Modem Configuration

The properties button on the toolbar will bring up information on the selected modem in your network (see image below).

The Properties screen brings up 3 tabs. On the 'Settings' tab we can read the information from the radio, make changes necessary and write this information back to the radio. Options on the left are shown below.



- Local or Remote

Access to the radio is determined here, either 'Local' with the cable or 'Remote' over the air.

- READ ALL

Selecting this 'button' will result in a query being sent to the specified modem interrogating All the parameters.

4.0 Modem Configuration (continued)

- READ

Query is sent requesting values of the checked box parameters shown above. Note that a box next to the register must be checked in order to read or write that information to or from the modem.

- Write

Information in the checked boxes is sent to the modem and written into memory.

- Reset

Resets the modem. It is good practice to RESET then READ after a WRITE to verify that parameters have all been set as desired within a given modem.

- Serial No.

Query is sent requesting the serial number of the modem.

- Version

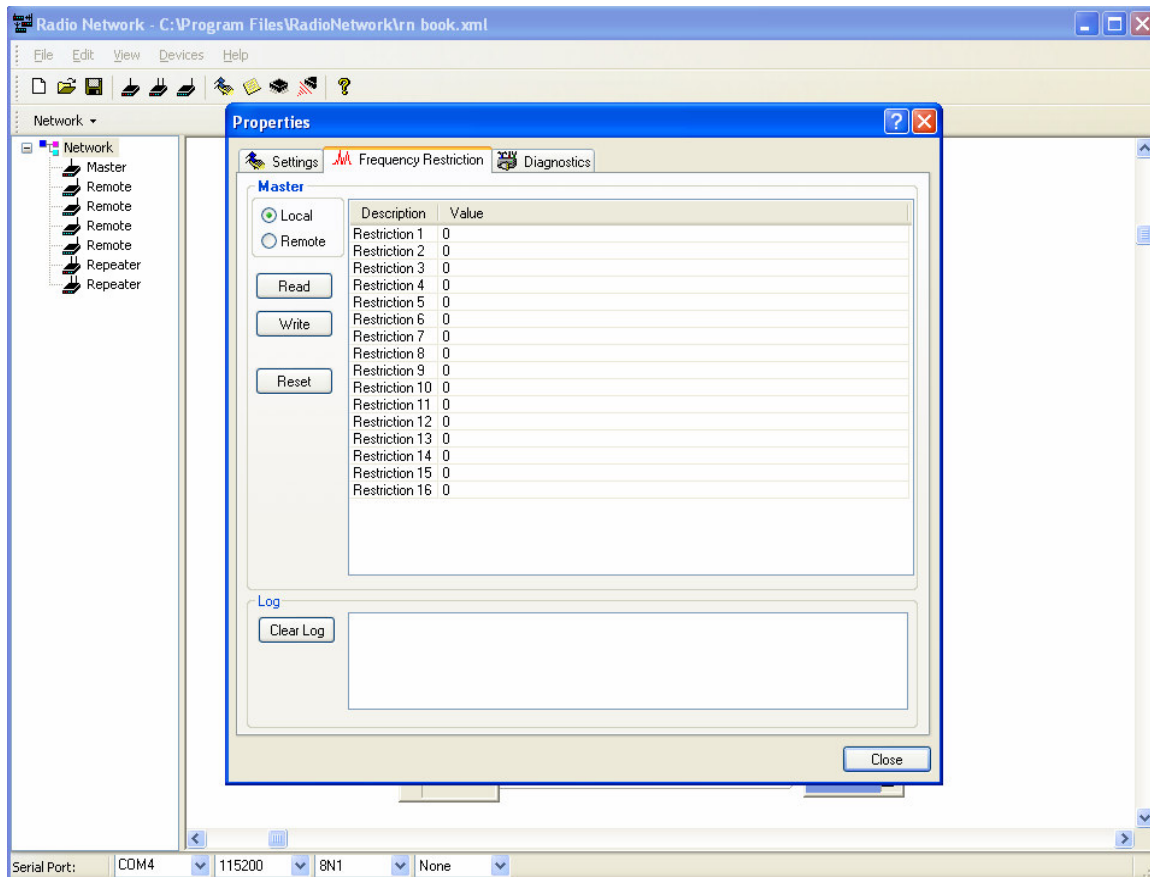
Query is sent requesting the version of the firmware of the modem.

- Clear Log

This 'button' clears all information from the log screen.

5.0 Frequency Restriction

The next tab on the Properties screen is the 'Frequency Restriction' tab. This gives the user the ability to restrict the modems from using certain frequencies on the network. The following is an example of entering Frequency Restrictions on the Radio Network utility.



Note: All modems in the network must have the same frequency restrictions in them.

The Format for restricting is to name the unit address, the frequency you wish to start restricting and the end frequency you wish to restrict, next start frequency, next end frequency, etc

UA:StartFreq1,EndFreq1,StartFreq2,EndFreq2,StartFreq3,EndFreq3..... Where UA is the Unit Address, StartFreq1 is the Starting Frequency to restrict, EndFreq1 is the Ending Frequency to restrict.

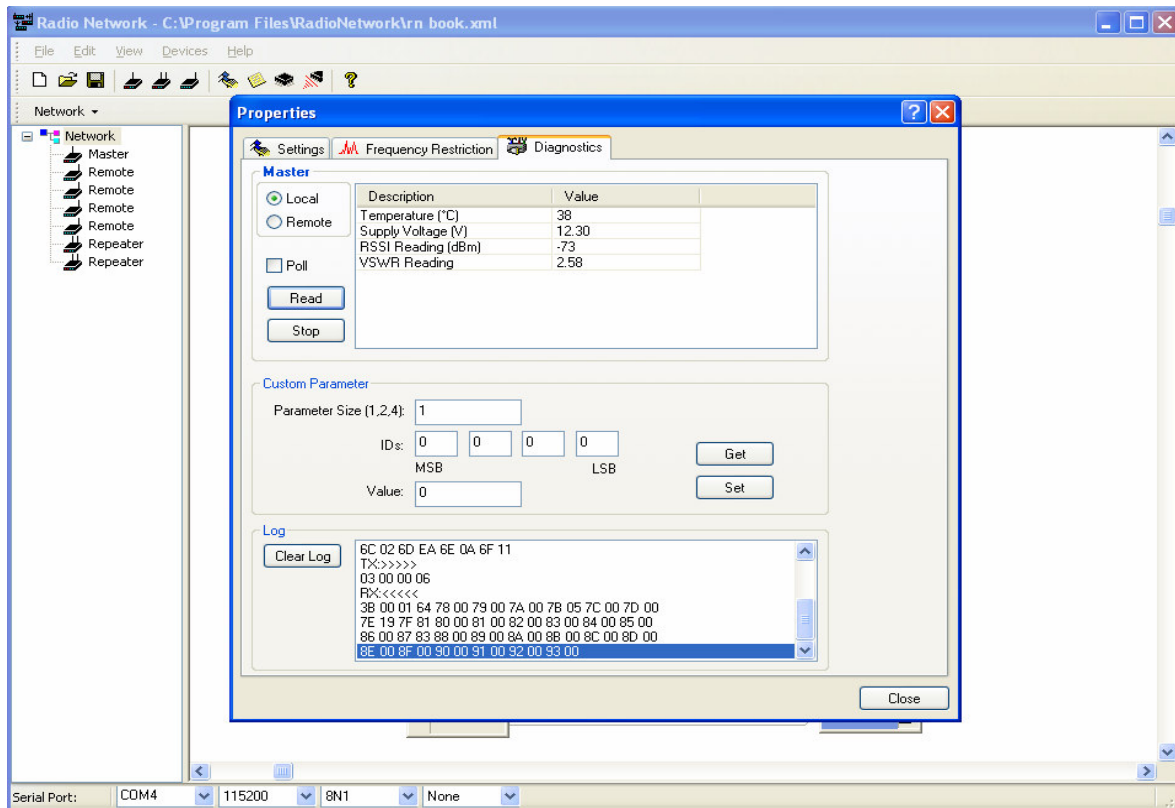
Example:

2:902400,903400

You would then Write this configuration into the memory of the modem.

6.0 Diagnostics

As with 'Settings' and 'Frequency Restriction', the 'Diagnostics' function is available. I.e. whether directly connected to a specific modem or querying a distant modem connected to the network wirelessly, the user is able to see a 'snapshot' or poll the modem, information necessary to see how well the modem is functioning.



Values which may be interrogated are: Temperature (internal) (degrees Celsius), Supply Voltage (VDC), RSSI (receive signal strength) (dBm) and VSWR (reflected power) (mW).

A quick query of all parameters may be done by selecting 'Read'.

For Regular updates of a modem check the box beside 'Poll'.

Clicking the 'Stop' button will stop the program from downloading any further diagnostic information.

The **Custom Parameter** section is used to change individual registers and make improvements on a configuration that requires special circumstances, and should not be used unless instructed to do so by Microhard Systems Inc. Support Personnel.

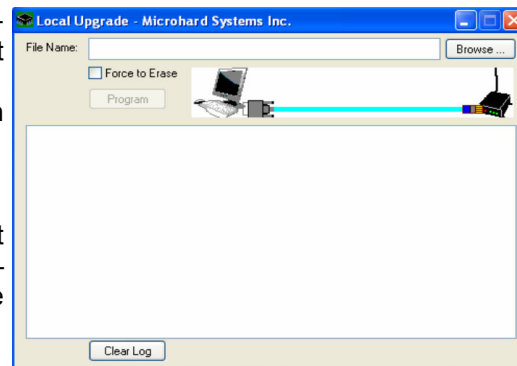
7.0 Firmware Upgrade

Firmware upgrades may be accomplished via the Radio Network utility, along with the required firmware upgrade cable and an appropriate .bin firmware file.

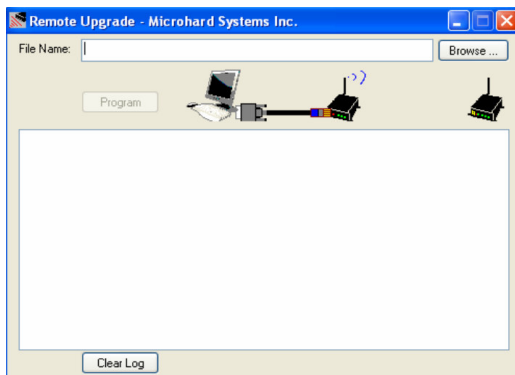
*Note that this program can also upgrade software over the air, via the Remote Upgrade toolbar button.

The procedure to upgrade locally is as follows:

1. Connect firmware upgrade cable (Blue cable) between PC (running Radio Network utility) and target modem.
2. Select the 'Hard Upgrade' tab on the main screen toolbar.
3. BROWSE to the desired .bin file.
4. Select the 'PROGRAM' button.
5. There will be 'upgrade status' text scrolling in the text box... WAIT until an UPGRADE COMPLETED message appears. At that time the upgrade will have been successfully completed.



The procedure to upgrade over the air is as follows:



1. Connect diagnostic cable (Black cable) between PC (running Radio Network utility) and modem.
2. Select the target modem and read all information from the modem.
3. Select the 'Soft Upgrade' tab on the main screen toolbar.
4. Browse to the desired .bin file.
5. Select the 'PROGRAM' button.
6. There will be 'upgrade status' text scrolling in the text box... WAIT until an 'UPGRADE COMPLETED' message appears. At that time the upgrade will have been successfully completed.

Appendix A: S Registers

S0

Auto Answer

modem will power-up in command mode
 *modem will power-up in data mode

S2

Escape Code

contains ASCII value of escape character
 *43' is default value, which represents the ASCII character '+'
 values greater than 127 disable the escape feature and prevent user from returning to command mode
 changes cannot be stored to non-volatile memory

S101

Operating Mode

Master
 Repeater
 Slave

S102

Serial Port Baud Rate (bps)

- 230400
- 115200
- 57600
- 38400
- 28800
- 19200
- 14400
- *9600
- 4800
- 4800
- 3600
- 2400
- 1200
- 600
- 300

S103

Wireless Link Rate (bps)

19200
 115200
 *172800
 230400

S104

Network ID

0-4,000,000,000
 *1234567890

S105

Unit Address

2-65534 (master is 1, broadcast is 65535)

S107

Bit Mask

-up to 16 characters

S108

Output Power Level

20-30dBm
 *30 (1W)

*Notes Default setting

S110

Data Format (of Asynchronous serial input to modem)

- *8N1
- 8N2
- 8E1
- 8O1
- 7N1
- 7N2
- 7E1
- 7O1
- 7E2
- 7O2
- 9N1

S113

Packet Retransmissions

0-65535
 *5

S118

Roaming

65535-roaming enabled
 1-254-fixed upstream unit
 *1

S123

RSSI Value (dBm, read only)

S133

Network Type

Point-to-Multipoint (PMP)
 Point-to-Point (PP)
 Peer-to-Peer (P2P)

S140

Destination Address

1-65535

S141

Repeater Existence

*no repeater
 1 or more repeaters exist

S142

Serial Channel Mode

*RS-232 interface
 half-duplex RS-485
 full-duplex RS-485

S143

Sleep Mode

*alwaysactive (no sleep)
 sleep mode 1, stays awake on local and air data
 sleep mode 2, stays awake only on local data (no longer supported?)
 sniff mode 1, stays awake on local and air data
 sniff mode 2, stays awake only on local data
 new sleep modes, developed for application, not 100% defined

*Notes Default setting

Appendix A: S Registers (Continued)

S144**Sleep Duration (seconds)**

0-65535

*60

S145**Awake Timeout (seconds)**

0-65535

*10

S149**LED Brightness (%)**

0-100

*100

S151**Quick Sync Timeout (ms)**

100-65534

*200

S153**Address Tag**

Enable

*Disable

S237**Sniff Duration (hops)**

1-255

*10

S158**FEC Mode**

*None

Hamming(7,4)

Hamming(15,11)

Hamming(37,24)

Binary BHC(47,36)

Golay(23,12,7)

ReedSoloman(15,11)

&K**Hardware Handshaking**

*None

Hardware

&S**DSR Signaling**

*AlwaysOn

DataModeOn

RemoteDTR

&D**DTR Signaling**

*DTR Ignored

Command Mode Control

*Notes Default setting



Building 17, 2135-32nd Avenue NE
Calgary, Alberta
Canada T2E 6Z3

Phone: (403) 248-0028
Fax: (403) 248-2762
www.microhardcorp.com